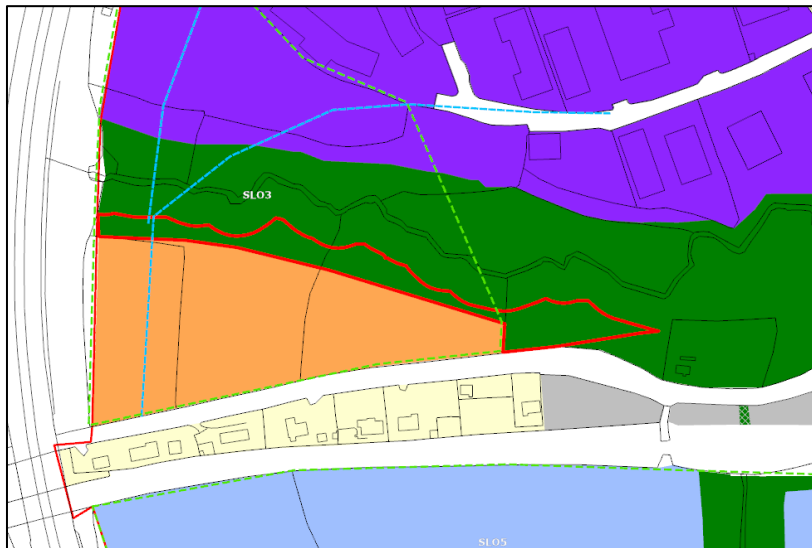


Material Amendment No. 20B

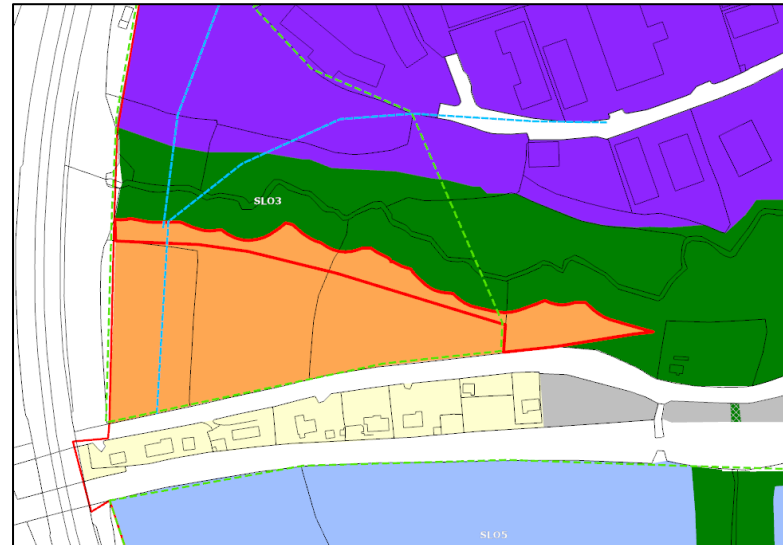
Amend the map of **Map SLO3** as follows:

Amend area of RN2 zone at southern end of SLO (Glenealy Road) as follows:

Draft LAP



Material Amendment LAP



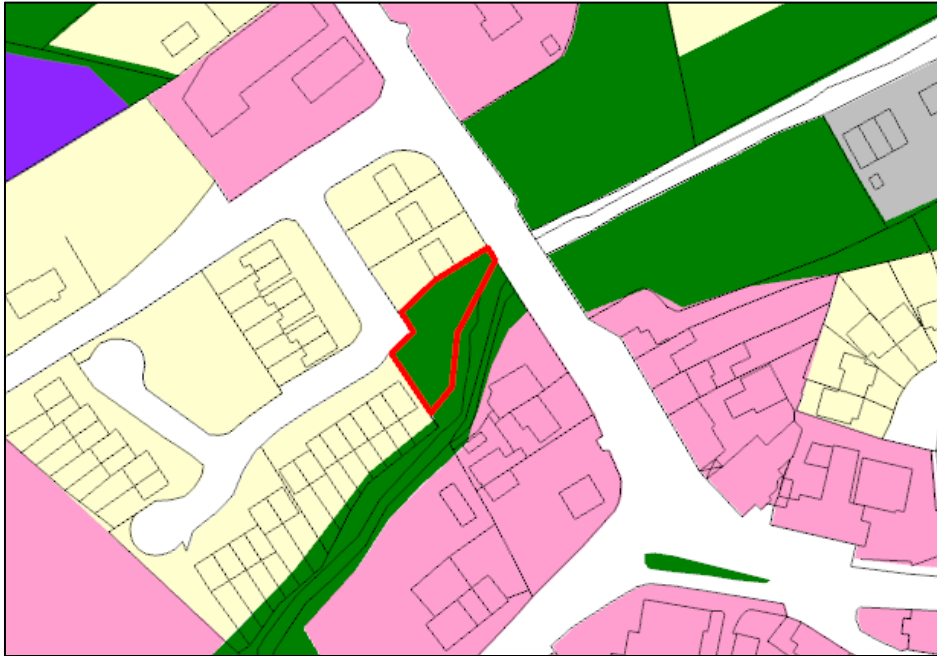
Change consequent: Amend SLO boundary to reflect this zoning change

Note: The OS1 (Open Space) zoning was amended to OS2 (Natural Areas) at the proposed amendment stage

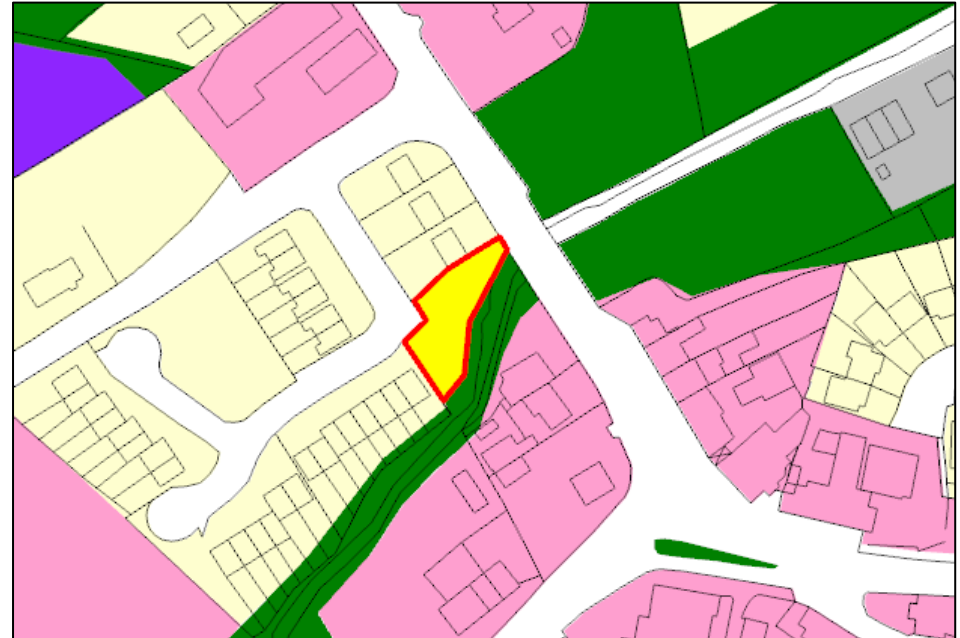
Material Amendment No. 38

Amend zoning of land measuring c.0.06ha to RN1 (New Residential) at Charvey Court, Rathnew as follows:

Draft LAP



Material Amendment LAP

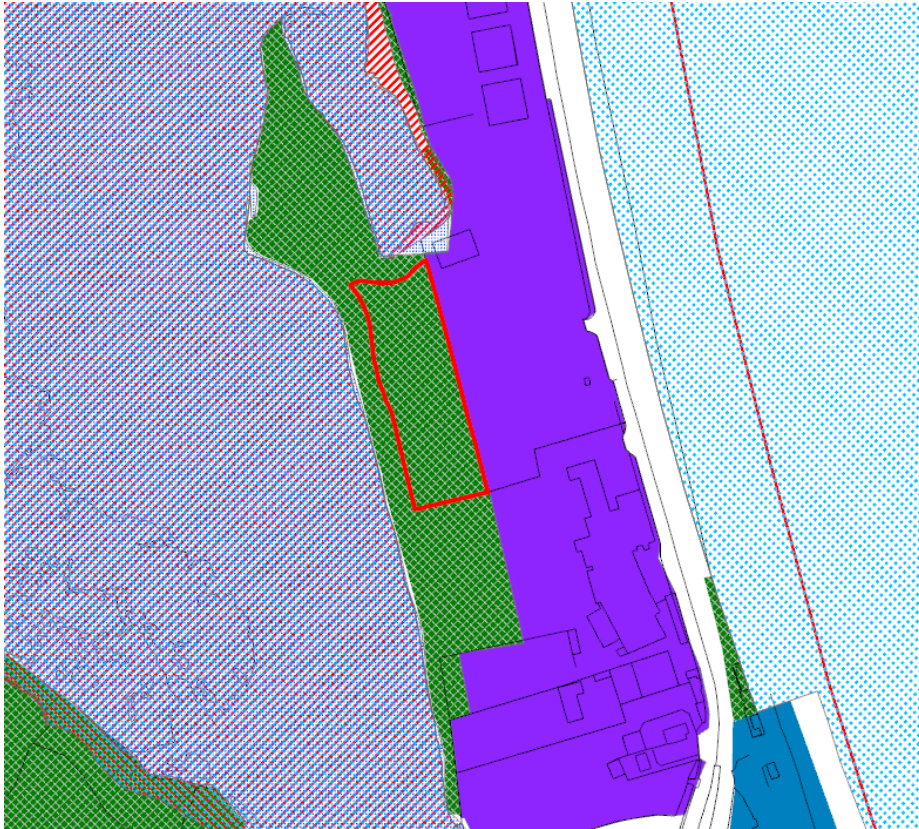


Note: The OS1 (Open Space) zoning was amended to OS2 (Natural Areas) at the proposed amendment stage

Material Amendment No. 41

Change c. 1ha at The Murrough from OS2 (Natural Areas) to E (Employment)

Draft LAP



Material Amendment LAP

